

# Perfect Penthouses

With unparalleled city views, these inspiring residences reach new heights in luxurious living

## ONE JACKSON SQUARE

*Three magnificent levels,  
forever views*



This quintessential penthouse, an urban oasis in the heart of the West Village, overlooks Jackson Square Park and boasts magical 360-degree Manhattan views. A palatial triple-floor residence with two fireplaces and private rooftop, the penthouse at One Jackson Square encompasses 7,220 square feet of idyllic space.

A grand 1,300-square-foot great room complements a gourmet kitchen with chef-grade Miele and Sub-Zero appliances. Other spaces include a stunning glass-encased double-height observatory, four sumptuous bedrooms and five Calacatta slab marble bathrooms. The sprawling rooftop features a pristine Endless swimming pool, powder room and fully appointed rooftop kitchen with gracious entertaining area.

**PAULA BURCHILL**  
212.366.1110

EVAN JOSEPH

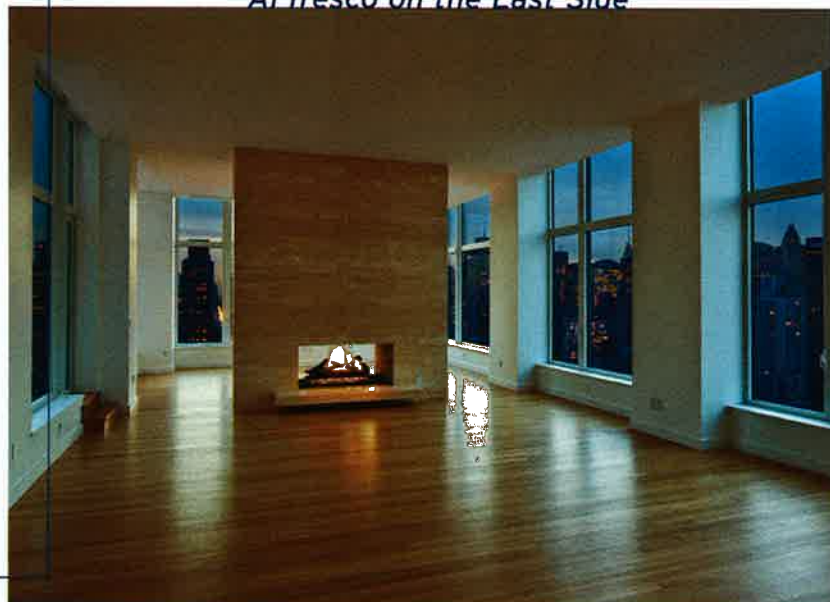
Rising high above the Upper East Side, The Laurel Condominium's top floor penthouse is the ultimate in exceptional living. Private elevator access takes you to this 4-bedroom, 4.5-bathroom residence on the 31st floor, featuring 12-foot ceilings and solid white oak floors. Nearly floor-to-ceiling windows display panoramic river and city views. The triple exposure great room with custom double-sided limestone fireplace makes for a dramatic entertaining space. More than 3,000 square feet of private outdoor space includes a magnificent bi-level terrace and roof deck with an outdoor fireplace.

The Laurel offers 12,000 square feet of private amenities, including a 50-foot lap pool and triathlon training center, full services and on-site parking. The building is 60 percent sold with financing available and immediate occupancy.

**JOANIE SCHUMACHER/JEANNIE WOODBREY**  
212.750.5550

## THE LAUREL

*Al fresco on the East Side*





EVAN JOSEPH

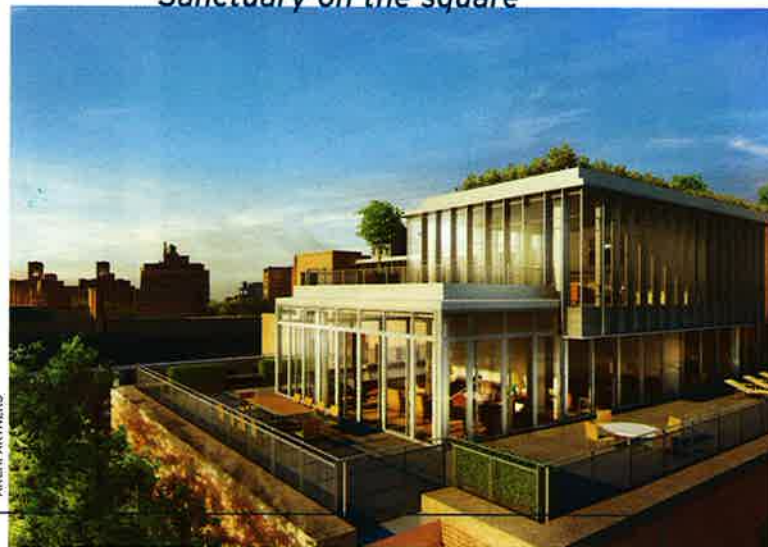
## GEORGICA

*All glass and light*

Perched on the 21st floor, Georgica's light-filled penthouse is comprised of 2,700 gracious square feet wrapped in dramatic floor-to-ceiling glass, revealing 360-degree city views. There are four generously-sized bedrooms, including a gracious master suite with dressing room, and four-and-a-half baths. A magnificent eat-in kitchen and great room with a fireplace and adjacent terrace are perfect for entertaining. Impeccably finished, modern and warm, the penthouse is Georgica's pinnacle offering.

Building amenities include a fitness center, landscaped roof deck, outdoor and indoor play areas and concierge service by Abigail Michaels.

**BETH STERN**  
212.988.8511



ARCHPARTNERS

## CHELSEA ENCLAVE

*Sanctuary on the square*

Penthouse A is the premier penthouse at Chelsea Enclave. Located in the southwest wing, this 3,400-square-foot, 4-bedroom duplex home is distinguished by floor-to-ceiling glass. Two huge wraparound private terraces feature city views to the South and unobstructed park views to the West and North.

With interiors by Alan Wanzenberg, Chelsea Enclave marries exceptional design and new construction with one of the most charming and peaceful settings in all of Manhattan. Uniquely located on the eastern edge of the General Theological Seminary of New York, Chelsea Enclave offers a one of a kind sanctuary in the heart of New York City.

**DONNA PUZIO**  
212.647.0077

## SOHO MEWS

*A Gwathmey Siegel original*



ZACH DESART

With 4 bedrooms and 4.5 baths plus a gas-burning fireplace, this masterfully designed, triple-exposure penthouse offers 3,468 square feet of living space. A private 1,591-square-foot wraparound terrace features an outdoor spa tub. Dramatic floor-to-ceiling glass and 10-foot ceilings provide unparalleled light and panoramic views from Soho and downtown Manhattan to the Empire State Building and beyond.

Soho Mews blends architecture and design by Gwathmey Siegel with all the charm and detail of the neighborhood's traditional 19th-century cast-iron buildings. Made up of two separate structures connected by a private landscaped garden designed by Peter Walker, Soho Mews offers generous lofts, penthouses and street-entrance townhouses.

**SHELLEY O'KEEFE**  
212.226.0020